
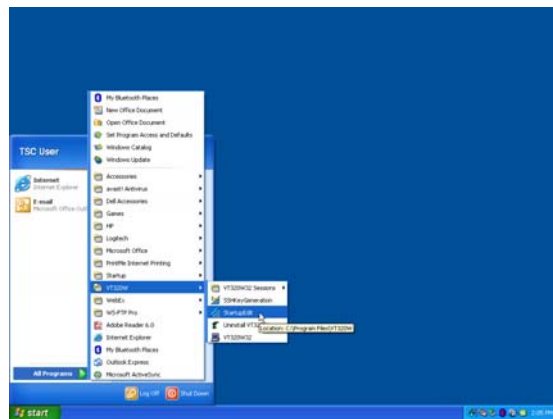


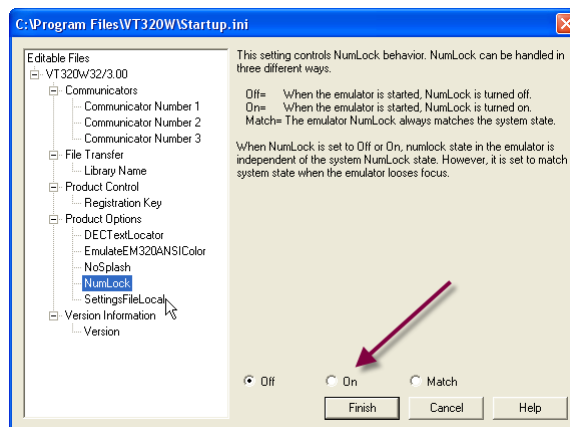
## Number lock turns off when using VT320 Emulator with TSC Software Products

- 
- Symptom:** Number lock turns off chronically when using VT320 emulator for TSC Software access
- Products Affected:** All products
- Treatment:** The startup settings of your emulator need be adjusted using the following steps (example shown using Windows XP):
- 

1. Logout and close all VT320 sessions that you have running.
2. Click on the Microsoft  button on your desktop
3. Select All Programs>VT320W>Startupedit



4. Expand the editable files list by clicking on the + sign. Select the **NumLock** option listed under **Product Options**.



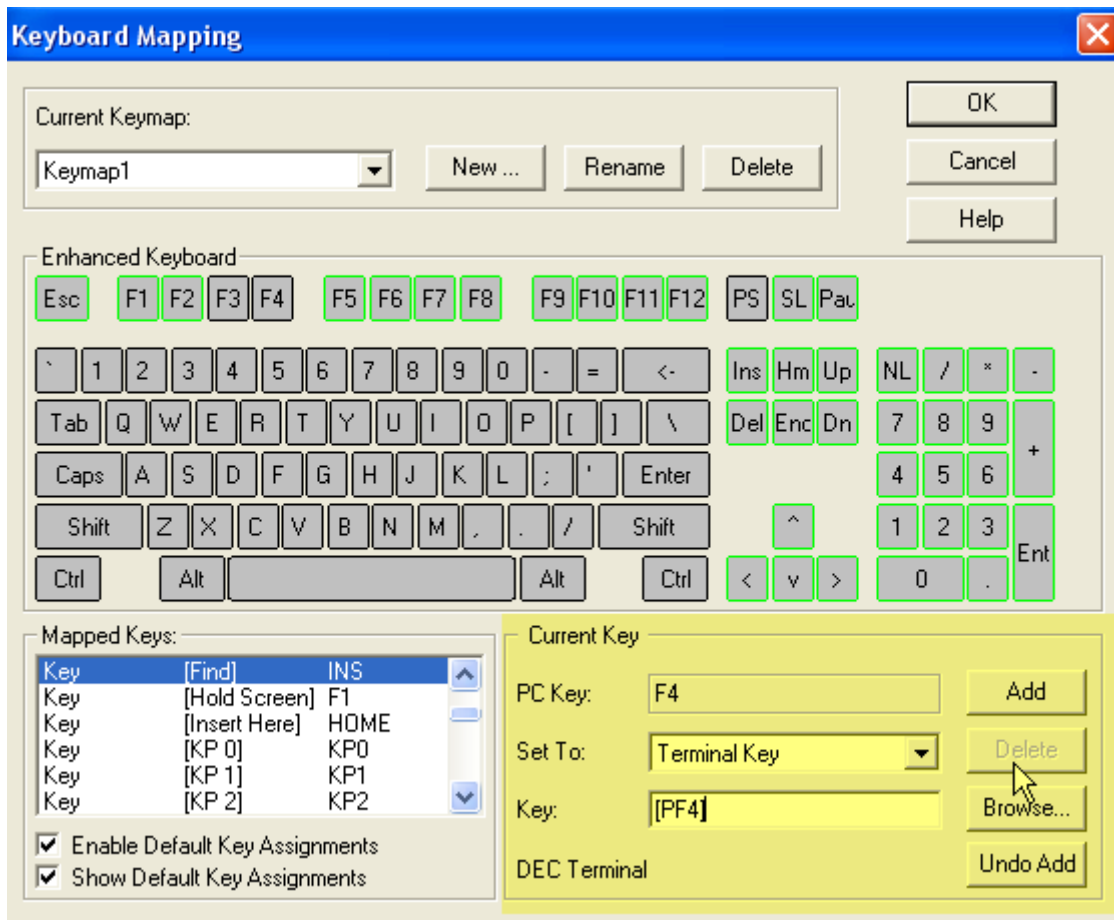
5. Select the radio button next to the **On** option and click **Finish**

Alternative Method: (advanced users/IT)  
Modify the startup.ini file in the VT320W installation directory so that Numlock=1

## Re-Mapping the AD-Hoc Key (-)

- Symptom:** After changing the startup settings of my num-lock key to on in VT320, I can no longer use my “-“ key on the keypad to access my ad-hoc menu
- Products Affected:** All products
- Treatment:** The ad-hoc key needs to be mapped to a different key on your keyboard than the “-“ key

1. Logon to TSC
2. Click on Setup and select Keyboard Mapper
3. Click on the graphical representation of the F4 key (or any un-assigned key that you wish your ad-hoc key to be invoked with)



4. Change the setting for this key as the diagram displays-**Set To: Terminal Key** **Key: [PF4]**
5. Click on ADD
6. Click on OK (this will close the key mapping utility)
7. You are done and can now use the F4 key to access your Ad-hoc menu

*Alternatively you can change the Current Keymap to “Enhanced PC/VT”, however, this will change the location of your <FIND>, <SELECT>, etc... keys*